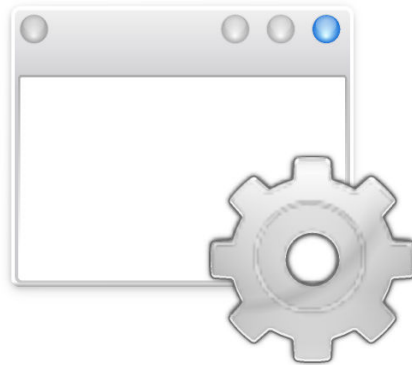


# Window Rules

Lauri Watts

Parts of this documentation was converted from the KDE UserBase KWin Rules page and updated by the KDE Documentation team to Plasma 5.8.



## Window Rules

# Contents

<b>1</b>	<b>Window Specific Settings: Quick Start</b>	<b>6</b>
<b>2</b>	<b>Overview</b>	<b>7</b>
<b>3</b>	<b>Examples and Application Workaround</b>	<b>8</b>
<b>4</b>	<b>KWin Rule Editor</b>	<b>9</b>
4.1	Invoking the KWin Rule Editor . . . . .	9
4.1.1	Rule Evaluation . . . . .	10
4.2	Rule Editor . . . . .	10
4.2.1	Window Matching . . . . .	11
4.2.2	Window Attributes . . . . .	11
<b>5</b>	<b>Window Matching</b>	<b>12</b>
5.1	Detect Window Properties . . . . .	13
<b>6</b>	<b>Window Attributes</b>	<b>15</b>
6.1	Parameters . . . . .	15
6.2	Attributes . . . . .	16
6.2.1	Size & Position . . . . .	16
6.2.2	Arrangement & Access . . . . .	18
6.2.3	Appearance & Fixes . . . . .	18
<b>7</b>	<b>Examples</b>	<b>21</b>
7.1	Pin a Window to a Desktop and set other Attributes . . . . .	21
7.2	Application on all Desktops and Handle One Child Window Uniquely . . . . .	26
7.2.1	Kopete Chat Rule . . . . .	26
7.2.2	Kopete Rule . . . . .	28
7.2.3	Kopete KWin Rule List . . . . .	29
7.3	Suppress a Window from showing on Pager . . . . .	30
7.4	Force a Window to the Top . . . . .	31
7.5	Multiple Rules per Application . . . . .	32
7.5.1	Thunderbird - Main . . . . .	32
7.5.2	Thunderbird - Composer . . . . .	34
7.5.3	Thunderbird - Reminder . . . . .	35

## Window Rules

<b>8 Application Workarounds</b>	<b>38</b>
8.1 Full-screen Re-size Error . . . . .	38
<b>9 Credits and License</b>	<b>40</b>

### **Abstract**

Here you can customize window settings specifically only for some windows.

## Chapter 1

# Window Specific Settings: Quick Start

Here you can customize window settings specifically only for some windows.

### NOTE

Please note that this configuration will not take effect if you do not use KWin as your window manager. If you do use a different window manager, please refer to its documentation for how to customize window behavior.

Many of the settings you can configure here are those you can configure on a global basis in the **Window Behavior** System Settings module, however some of them are even more detailed.

They encompass geometry, placement, whether a window should be kept above or below others, focus stealing prevention, and translucency settings.

You can access this module in two ways: from the titlebar of the application you wish to configure, or from the System Settings. If you start it from within System Settings you can use the **New...** to create a window profile, and the **Detect Window Properties** button on the resulting dialog to partially fill in the required information for the application you wish to configure.

You can also at any time **Modify...** or **Delete** any stored settings profile, and reorder the list. Reordering the list using the **Move Up** and **Move Down** buttons effects on how they are applied.

## Chapter 2

# Overview

KWin allows the end-user to define rules to alter an application's window attributes.

For example, when an application is started, it can be forced to always run on *Virtual Desktop 2*. Or a defect in an application can be worked-around to force the window above others.

Step-by-step [examples](#) are provided along with detailed information on using the [KWin Rule Editor](#) to specify [Window Matching](#) and [Window Attributes](#).

## Chapter 3

# Examples and Application Workaround

To see what's possible, detailed [examples](#) are provided which can also be used to model your own rules.

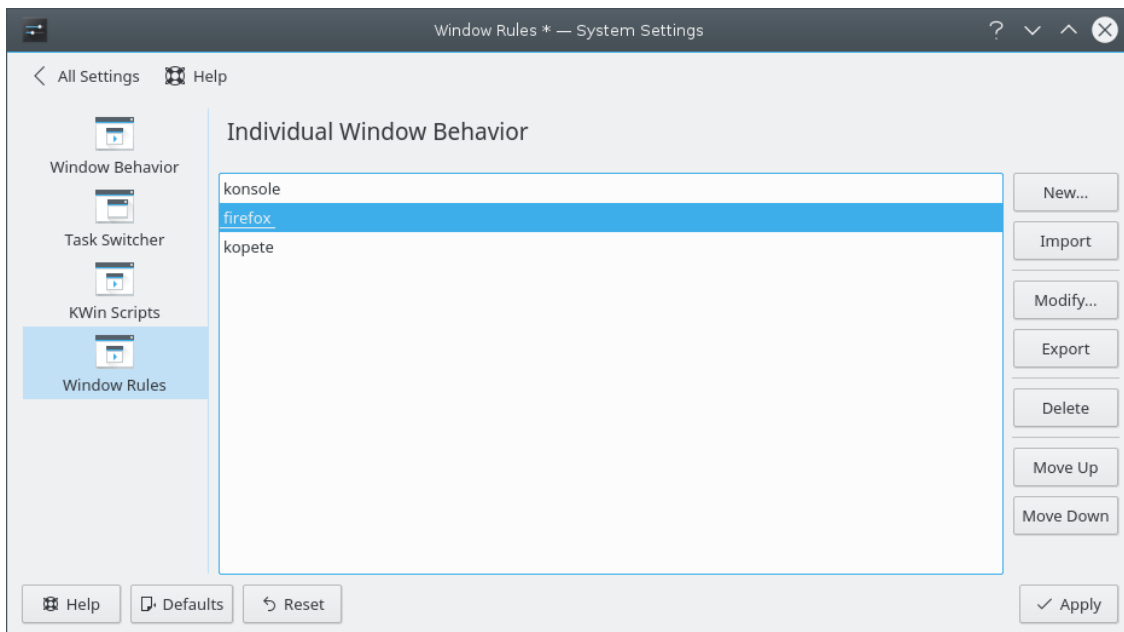
A special page is to dedicated to address [Application Workaround](#).



## Chapter 4

# KWin Rule Editor

### 4.1 Invoking the KWin Rule Editor



There are several ways to invoke the KWin Rule Editor. Below are two:

- Right-click on the title-bar of any window, choose **More Actions** → **Window Manager Settings...** and in the **Configure** window, select **Window Rules** or
- **System Settings** → **Window Behavior** → **Window Rules**

The main window is used to:

- Affect rules with **New...**, **Modify...** and **Delete**
- Share rules with others via **Import** and **Export**
- Ensure desired **rule evaluation** using **Move Up** and **Move Down**

## Window Rules

### 4.1.1 Rule Evaluation

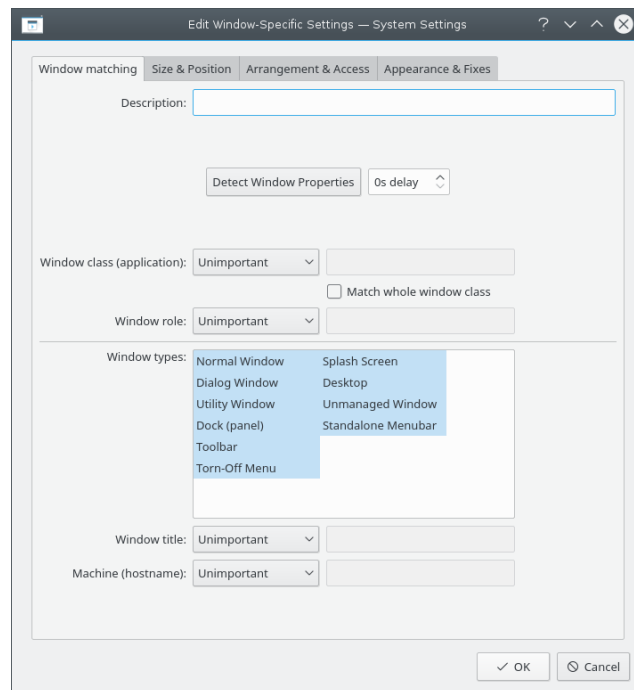
When an application starts (or the rules are modified), KWin evaluates the rules from the top of the list to the bottom. For all rules which match a window, the collective set of attributes are applied to the window, then the window is displayed.

Should two or more matching rules enable the same attribute, the setting in the *first* rule in the list is used.

#### TIP

You can tailor children windows for the application by placing the more restrictive rules first - see the [Kopete and Kopete Chat Window](#) example.

## 4.2 Rule Editor



The editor is composed of four tabs:

1. **Window matching**
2. **Size & Position**
3. **Arrangement & Access**
4. **Appearance & Fixes**

As the name implies, **Window matching** is used to specify criteria to match one or more windows. The other three tabs are used to alter the attributes of the matching windows.

#### TIP

Panels can also be affected.

## Window Rules

### 4.2.1 Window Matching

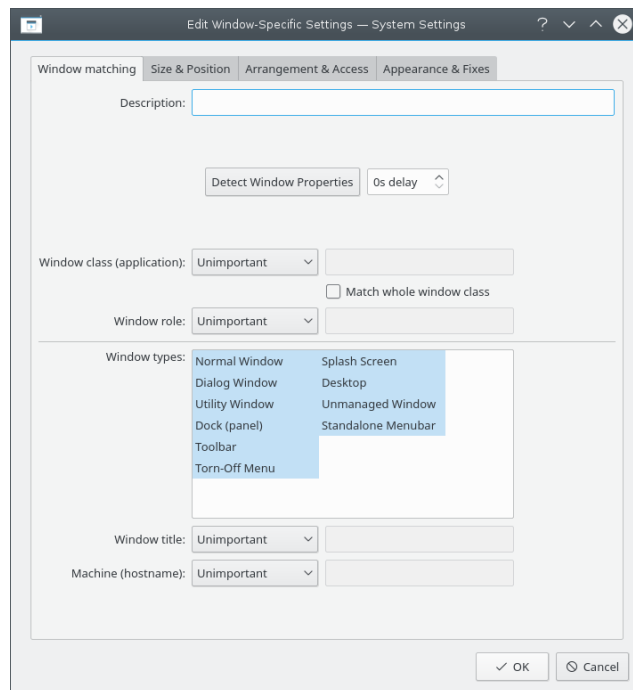
Each window rule has user specified [Window Matching](#) criteria. KWin uses the criteria to determine whether the rule is applicable for an application.

### 4.2.2 Window Attributes

Along with Window Matching criteria, each window rule has a set of [Window Attributes](#). The attributes override the corresponding application's settings and are applied before the window is displayed by KWin.

## Chapter 5

# Window Matching



The **Window Matching** tab is used to specify the criteria KWin uses to evaluate whether the rule is applicable for a given window.

Zero (match any window) or more of the following may be specified:

- **Window class (application)** - match the class.
  - **Match whole window class** - include matching the secondary class.
- **Window role** - restrict the match to the function of the window (e.g. a *main window*, a *chat window*, etc.)
- **Window types** - restrict the match to the type of window: **Normal Window**, **Dialog Window**, etc.
- **Window title** - restrict the match to the title of the window.
- **Machine (hostname)** - restrict the match to the host name associated with the window.

## Window Rules

### TIP

While it's possible to manually enter the above information, the preferred method is to use the **Detect Window Properties** button.

For each field, the following operators can be applied against the field value:

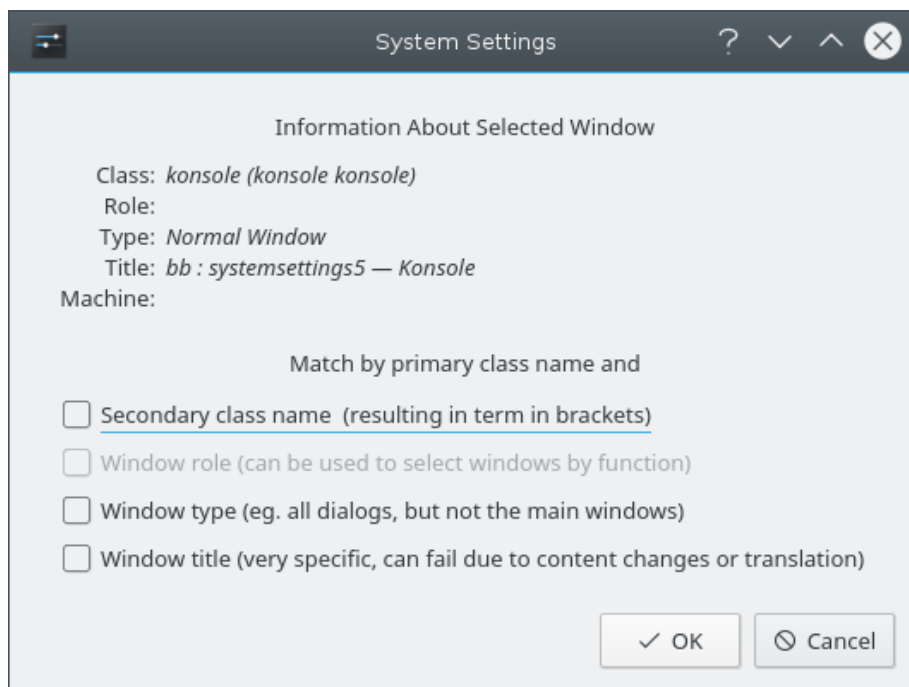
- **Unimportant** - ignore the field.
- **Exact Match**
- **Substring Match**

### NOTE

Both **Exact Match** and **Substring Match** implement case insensitive matching. For example, *AB* matches the string *AB*, *ab*, *Ab* and *aB*.

- **Regular Expression** - Qt's regular expressions are implemented - see [pattern matching using regular expressions](#).

## 5.1 Detect Window Properties



The **Detect Window Properties** function simplifies the process of entering the matching-criteria.

1. For the application you'd like to create a rule, start the application.
2. Next, in the **Window matching** tab, set the number of seconds of delay before the **Detect Window Properties** function starts. The default is zero seconds.

## Window Rules

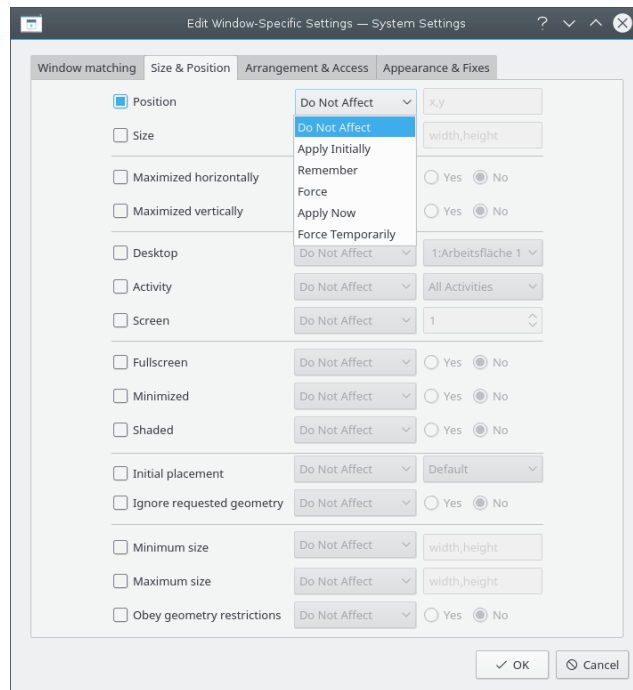
3. Click on **Detect Window Properties** and
4. When the mouse-cursor turns to cross-hairs, place it inside the application window (not the title bar) and left-click.
5. A new window is presented with information about the selected window. Select the desired fields:
  - **Secondary class name** - some applications have a secondary class name. This value can be used to restrict windows by this value.
  - **Window role**
  - **Window type**
  - **Window title**

Click the **OK** button to back-fill the **Window Matching** criteria.

By using a combination of the information, a rule can apply to an entire application (by **Class**) or a to a specific window **Type** within the **Class** - say a **Toolbar**.

## Chapter 6

# Window Attributes



The attributes which can be set are grouped by function in three tabs:

1. **Size & Position**
2. **Arrangement & Access**
3. **Appearance & Fixes**

Each attribute has a set of parameters which determines its disposition.

### 6.1 Parameters

Each attribute, minimally, accepts one of the following parameters. Additional, attribute-specific arguments are listed within each [attribute](#) definition.

## Window Rules

### Do Not Affect

Ensure a subsequent rule, which matches the window, does not affect the attribute.

### Apply Initially

Start the window with the attribute and allow it to be changed at run-time.

### Remember

Use the attribute setting as defined in the rule and if changed at run-time, save and use the new value instead.

### Force

The setting cannot be changed at run-time.

### Apply Now, Force Temporarily

Apply/Force the setting once and unset the attribute. The difference between the two is at run-time, **Apply Now** allows the attribute to be changed and **Force Temporarily** prohibits it to be altered until all affected windows exit.

#### WARNING

For **Apply Now**, if the rule has no other attributes set, the rule is deleted after evaluation whereas **Force Temporarily**, the rule is deleted after the last affected window terminates.

## 6.2 Attributes

#### TIP

The **Detect Window Properties** button back-fills attribute-specific values - for more information see [Window Matching](#). For example the height and width values of the **Size** attribute is set to the height and width of the detected window.

#### TIP

**Yes/No** arguments are used to toggle on or off attributes. Leniency with grammar helps one understand how a setting will be processed. 😊 For example, the attribute **Skip taskbar**, when set to **No** means do not skip the taskbar. In other words, show the window in the taskbar. 😊

### 6.2.1 Size & Position

#### Position

Position the window's upper left corner at the specified x,y coordinate.

#### TIP

KWin's origin, (0,0), is the upper left of the desktop.



## Window Rules

### Size

The width and height of the window.

### Maximized horizontally, Maximized vertically

These attributes are used to toggle the maximum horizontal/minimum horizontal window attribute.

### Desktop, Activity, Screen

Place the window on the specified (*Virtual*) *Desktop*, *Activity* or *Screen*. Use **All Desktops** to place the window on all *Virtual Desktops*.

### Fullscreen, Minimized, Shaded

Toggle the Fullscreen, Minimize and Shading window attribute. For example, a window can be started Minimized or if it is started Minimized, it can be forced to not.

#### TIP

Maximized attribute is emulated by using both **Maximized horizontally** and **Maximized vertically** or **Initial placement** with the **Maximizing** argument.

### Initial placement

Override the global window placement strategy with one of the following:

- **Default** - use the global window placement strategy.
- **No Placement** - top-left corner.
- **Minimal Overlapping** - place where no other window exists.
- **Maximized** - start the window maximized.
- **Centered** - center of the desktop.
- **Random**
- **In Top-Left Corner**
- **Under Mouse**
- **On Main Window** - restrict placement of a child window to the boundaries of the parent window.

### Ignore requested geometry

Toggle whether to accept or ignore the window's requested geometry position. To avoid conflicts between the default placement strategy and the window's request, the placement strategy is ignored when the window's request is accepted.

### Minimum size, Maximum size

The minimum and maximum size allowed for the window.

### Obey geometry restrictions

Toggle whether to adhere to the window's requested aspect ratio or *base increment*. In order to understand this attribute, some background is required. Briefly, windows must request from the Window Manager, a base increment: the minimum number of *height X width* pixels per re-size request. Typically, it's 1x1. Other windows though, for example terminal emulators or editors, use fixed-fonts and request their base-increment according to the size of one character.

## 6.2.2 Arrangement & Access

### Keep above, Keep below

Toggle whether to keep the window above/below all others.

### Autogroup with identical

Toggle the grouping (commonly known as *tabbing*) of windows.

### Autogroup in foreground

Toggle whether to make the window active when it is added to the current Autogroup.

### Autogroup by ID

Create a group via a user-defined ID. More than one rule can share the same ID to allow for seemingly unrelated windows to be grouped.

### Skip taskbar

Toggle whether to display the window in the taskbar.

### Skip pager

Toggle whether to display the window in pager.



### Skip switcher

Toggle whether to display the window in the **ALT+TAB** list.

### Shortcut

Assign a shortcut to the window. When **Edit...** is clicked, additional instructions are presented.

## 6.2.3 Appearance & Fixes

### No titlebar and frame

Toggle whether to display the titlebar and frame around the window.

### Titlebar color scheme

Select a color scheme for the titlebar of the window.

### Active/Inactive opacity

When the window is active/inactive, set its opacity to the percentage specified.

#### TIP

**Active/Inactive opacity** can only be affected when **Desktop Effects** are enabled.

## Window Rules

### Focus stealing prevention

When a window wants focus, control on a scale (from **None** to **Extreme**) whether to honor the request and place above all other windows, or ignore its request (potentially leaving the window behind other windows):

- None - Always grant focus to the window.
- Low
- Normal
- High
- Extreme - The window's focus request is denied. Focus is only granted by explicitly requesting via the mousing.

#### TIP

See **Accept focus** to make a window read-only - not accept any keyboard input.

### Accept focus

Toggle whether the window accepts keyboard input. Make the window read-only.

### Ignore global shortcuts

Toggle whether to ignore global shortcuts (as defined by **System Settings** → **Shortcuts and Gestures** → **Global Shortcuts** or by running `kcmshell15 keys` in **konsole**) while the window is active.

### Closeable

Toggle whether to display the **Close** button on the title bar.

#### TIP

A terminal window may still be closed by the end user by ending the shell session however using **Accept focus** to disable keyboard input will make it more difficult to close the window.

### Window type

Change the window to another type and inherit the characteristics of that window:

- Normal Window
- Dialog Window
- Utility Window
- Dock (panel)
- Toolbar
- Torn-Off Menu
- Splash Screen
- Desktop
- Standalone Menubar
- On Screen Display

## Window Rules

### WARNING

Use with care because unwanted results may be introduced. For example, a **Splash Screen** is a automatically closed by KWin when clicked.

### Block compositing

Toggle whether to disable compositing while the window *exists*. If compositing is enabled and the rule specifies to disable compositing, while *any* matching window exists, compositing will be disabled. Compositing is re-enabled when the last matching window terminates.

## Chapter 7

# Examples

**NOTE**

The first example details all the necessary steps to create the rules. In order to keep this page a manageable size, subsequent examples only list steps specific to the example.

**NOTE**

The **Pager** attribute refers to the **Virtual Desktop Manager**:



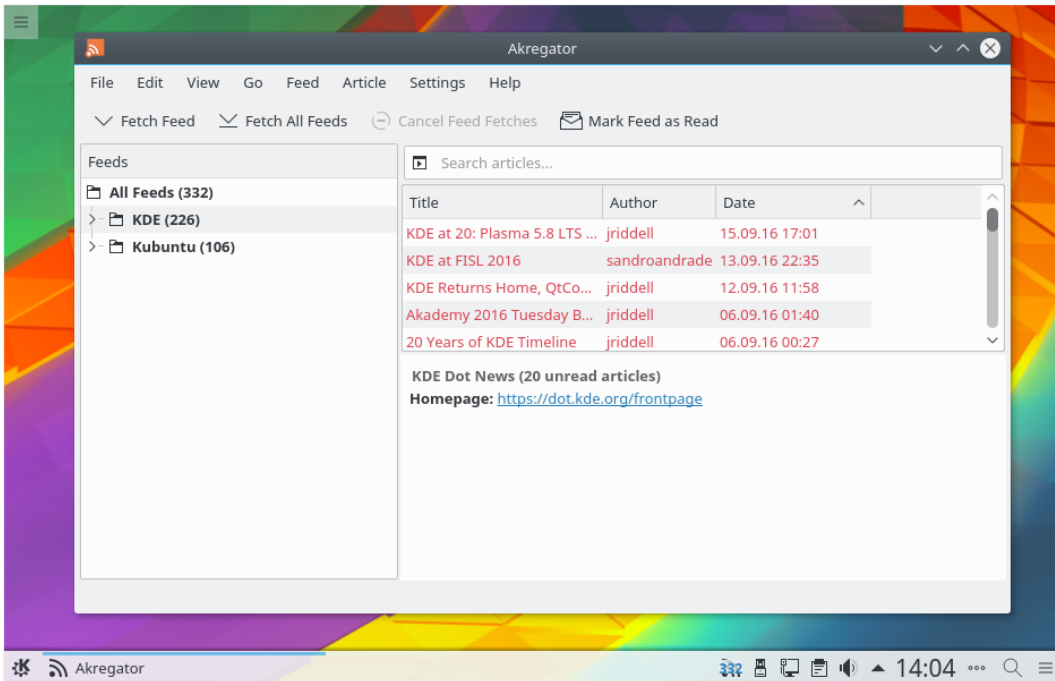
### 7.1 Pin a Window to a Desktop and set other Attributes

Pin Akregator to *Virtual Desktop 2*. Additionally, start the application with a preferred size and position. For each attribute, use the **Apply Initially** parameter so it can be overridden at runtime.

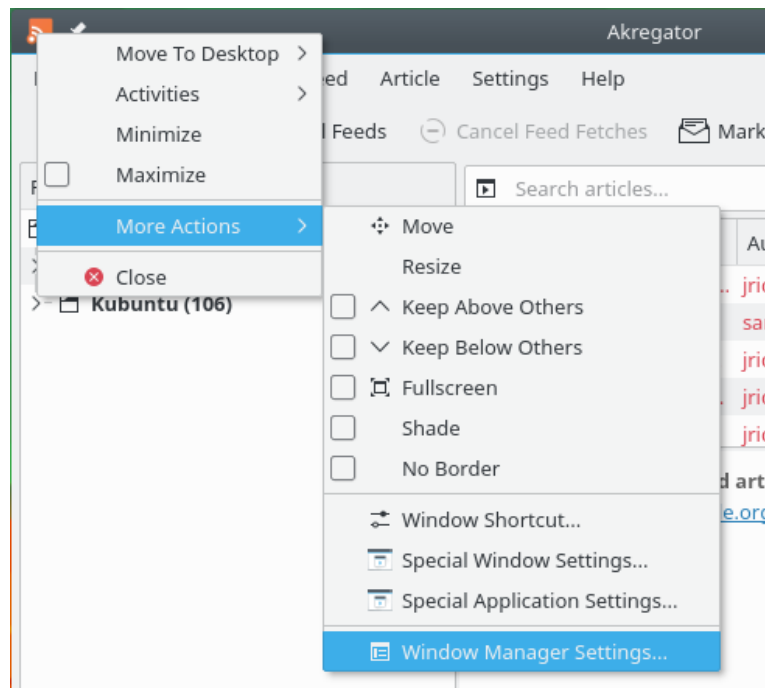
The KWin rule is created as follows:

1. Start Akregator on *desktop two*, size and position it to suit:

## Window Rules

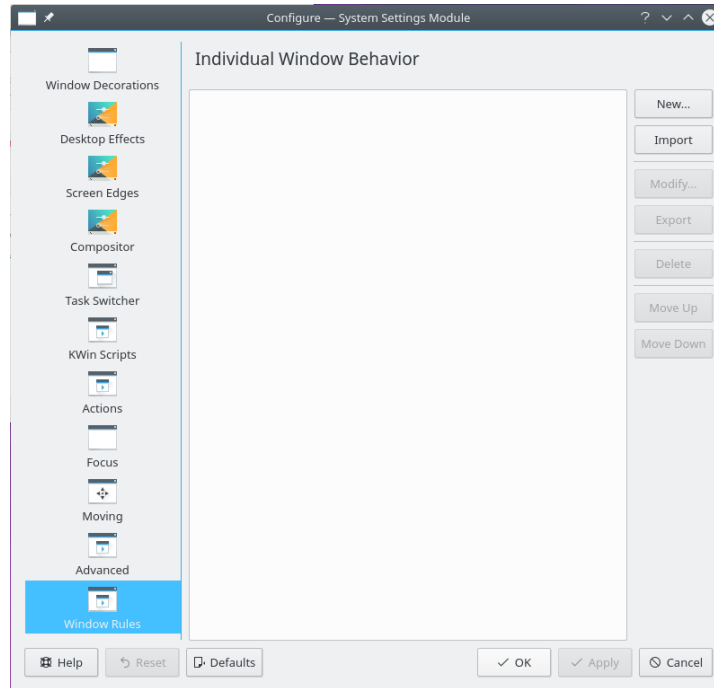


2. Right-click on the titlebar and select **More Actions** → **Window Manager Settings...**:

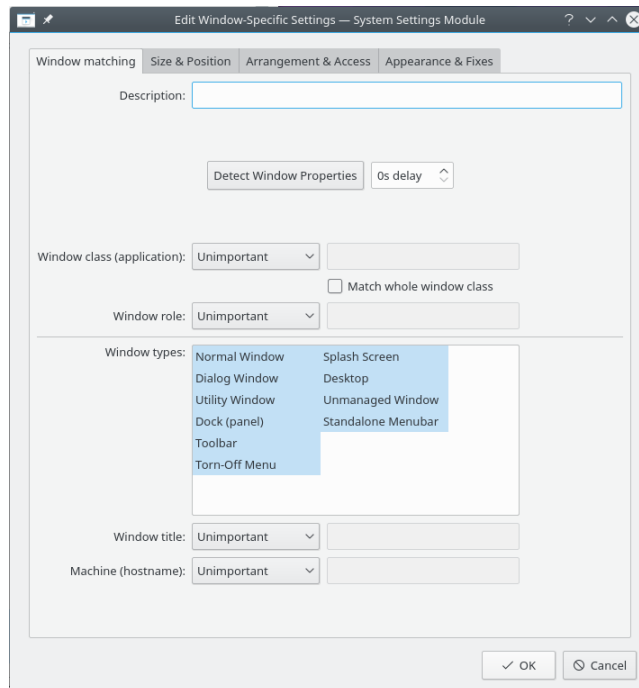


3. Select the **Window Rules** in the left column and click on **New...**:

## Window Rules

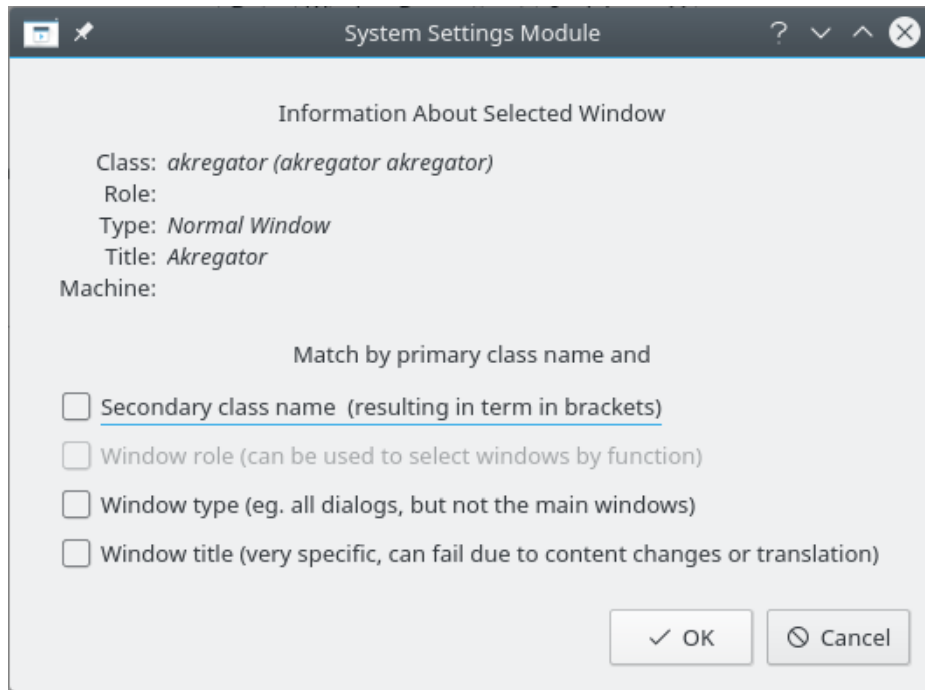


4. The **Edit Window-Specific Settings** window is displayed. **Window matching** is the default tab:

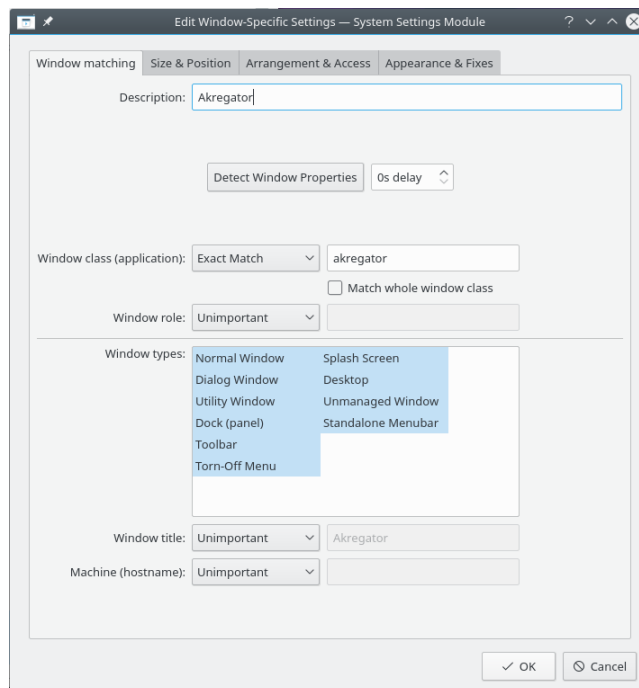


5. Click **Detect Window Properties** with **0s delay** the cursor immediately turns into cross-hairs. Click (anywhere) inside the Akregator window (but not the title bar). The window criteria are presented. Match only by primary class name so leave the check boxes unchecked - for additional information see [window matching](#):

## Window Rules



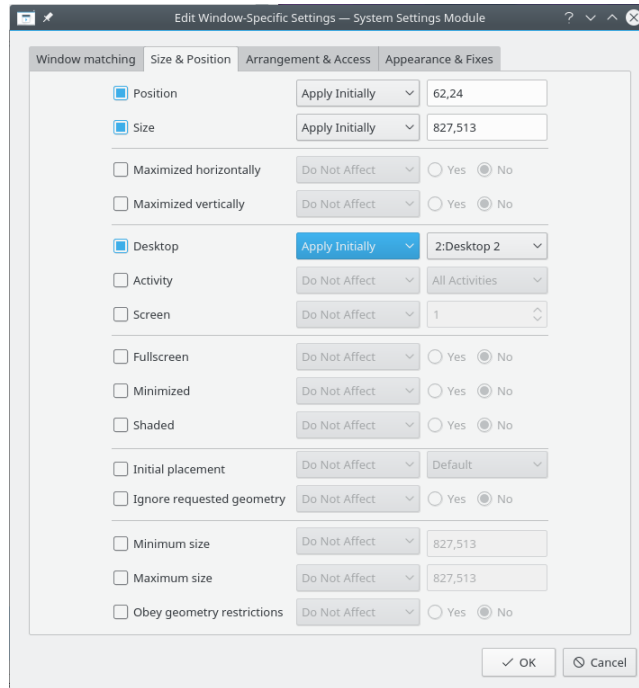
6. Clicking **OK** the previous window back-fills the results in the **Window Matching** tab. Enter a meaningful text in the **Description** field (which is displayed in the **KWin Rule** window):



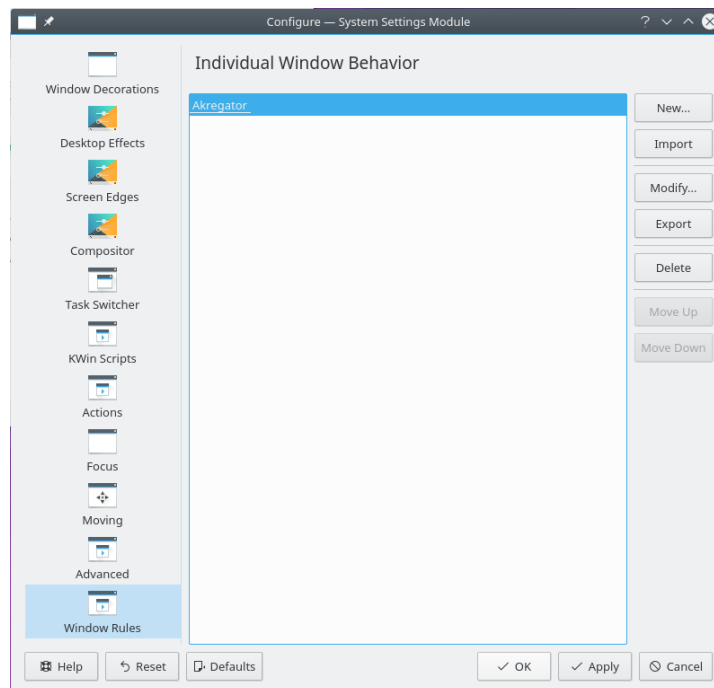
7. Enable the window attributes: **Position**, **Size** and **Desktop**. The initial values are set by **Detect Window Properties** and can be overridden:



## Window Rules



8. Clicking **OK** in the previous window returns to the main **KWin Rules**. The new rule with its description is listed:



9. Click **OK** to close the window.
10. Done.

## 7.2 Application on all Desktops and Handle One Child Window Uniquely

Except for conversation windows, display Kopete and its children windows on all desktops and skip the systray and pager. For children conversation windows, treat them as the parent window except show them in systray.

For each attribute, use the **Force parameter** so it can not be overridden.

In order to implement the above, two rules need to be created:

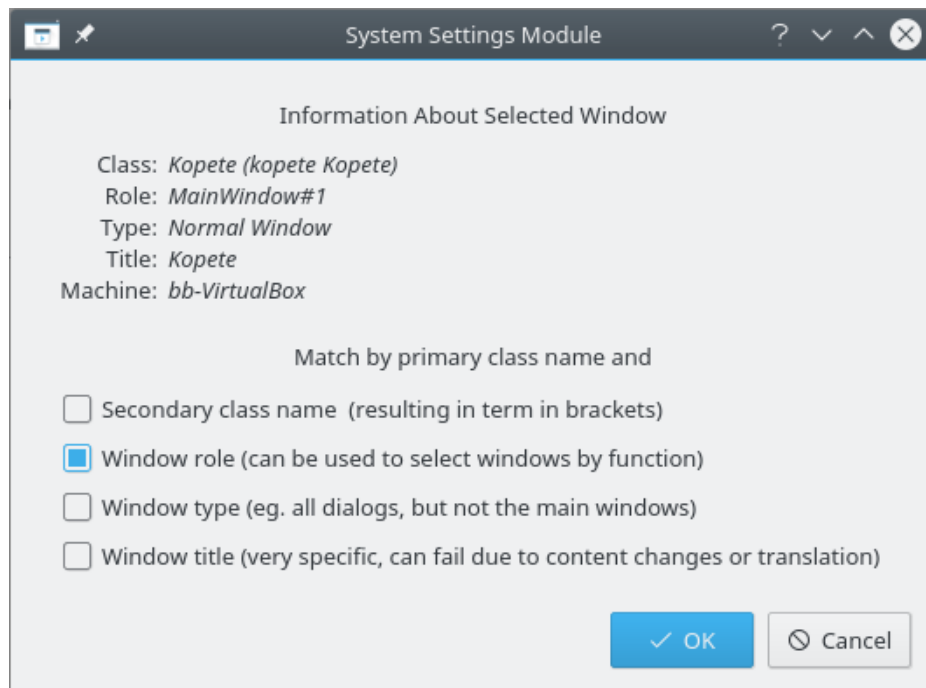
1. A rule for **Kopete Chat** and
2. A rule for Kopete

The **Kopete Chat** rule's matching-criteria is more restrictive than the *Kopete* rule as it needs to match a specific Window Role: the chat window. Due to [rule evaluation](#) processing, the **Kopete Chat** rule must precede the Kopete rule in the [KWin Rule list for Kopete](#).

### 7.2.1 Kopete Chat Rule

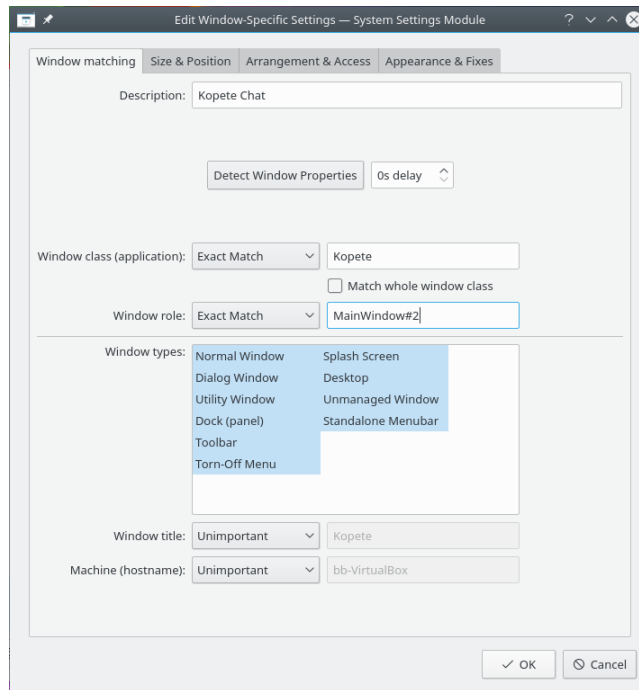
Assuming a **Kopete Chat** window is open:

1. Use **Detect Window Properties** and select the **Kopete Chat** window. Check the **Window role** box to restrict the criteria to chat windows - for additional information see [window matching](#):

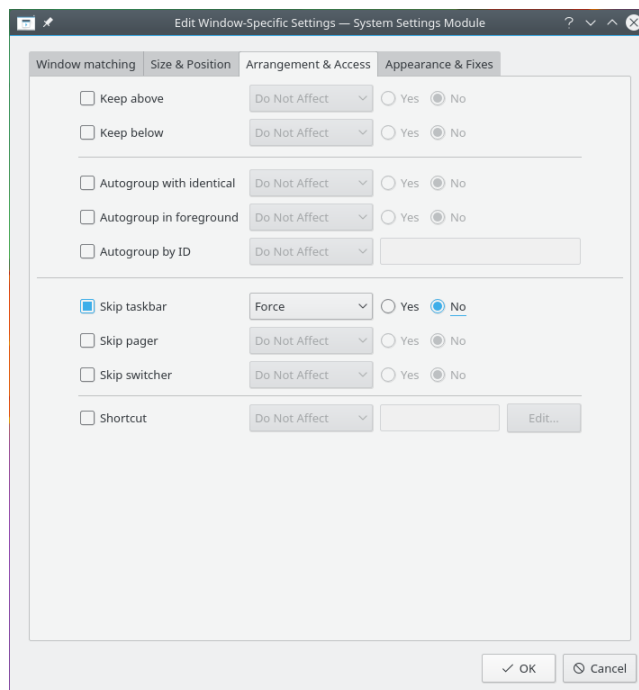


2. Clicking **OK** in the previous window back-fills the results in the **Window Matching** tab. Enter a meaningful text in the **Description** box:

## Window Rules



3. Enable the following attributes:



4. Click through to complete entry of the rule.

### NOTE

The **Skip taskbar** attribute is set to **No** to display the window in the taskbar which loosely translates

to: *no do not skip taskbar*

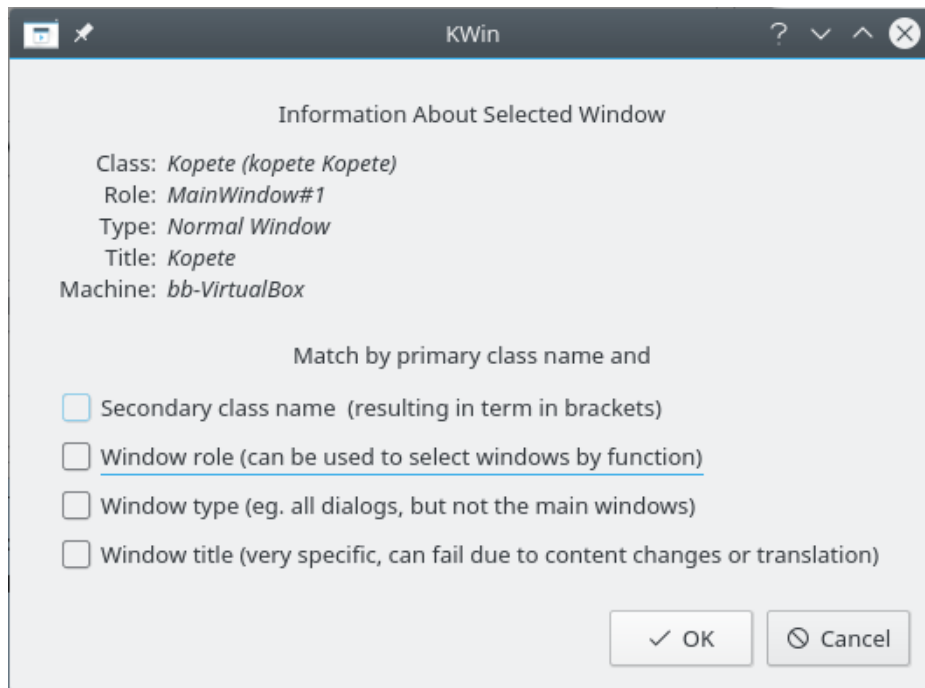


## Window Rules

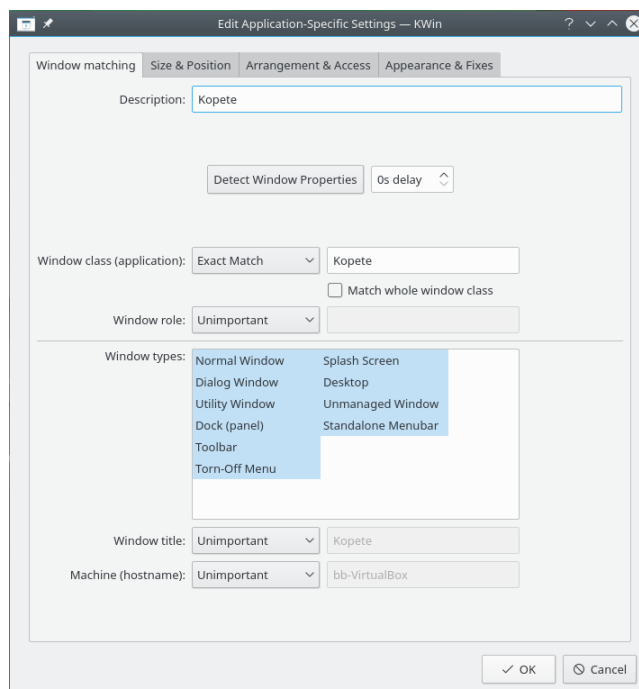
### 7.2.2 Kopete Rule

Assuming Kopete is open:

1. Use **Detect Window Properties** and select the Kopete window. Match only by primary class name so leave the check boxes unchecked - for additional information see [window matching](#):

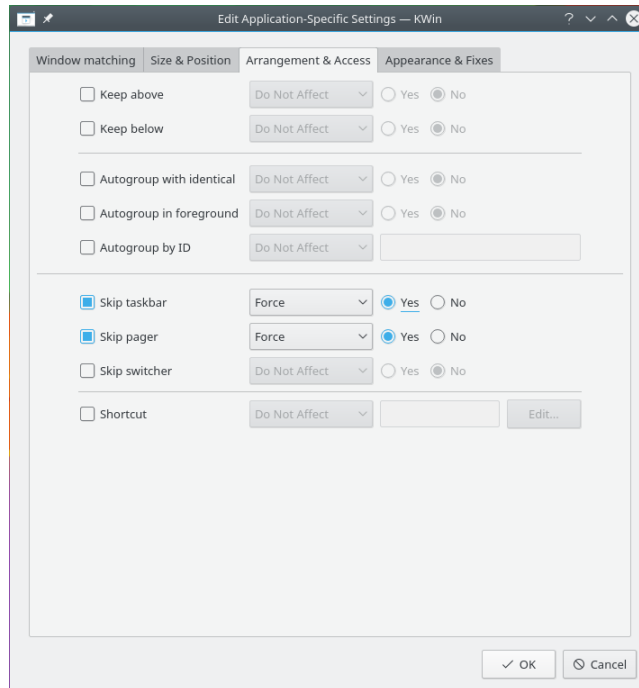


2. Clicking **OK** in the previous window back-fills the results in the **Window Matching** tab. Enter a meaningful text in the **Description** box:



## Window Rules

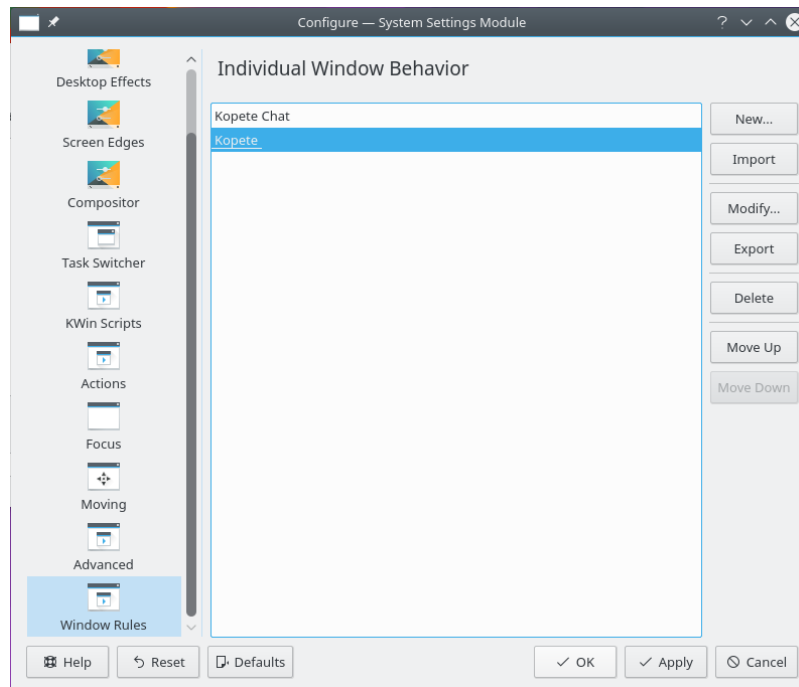
3. Enable the following attributes:



4. Click through to complete entry of the rule.

### 7.2.3 Kopete KWin Rule List

As mentioned, due to [rule evaluation](#) processing, the **Kopete Chat** rule must precede the Kopete rule:

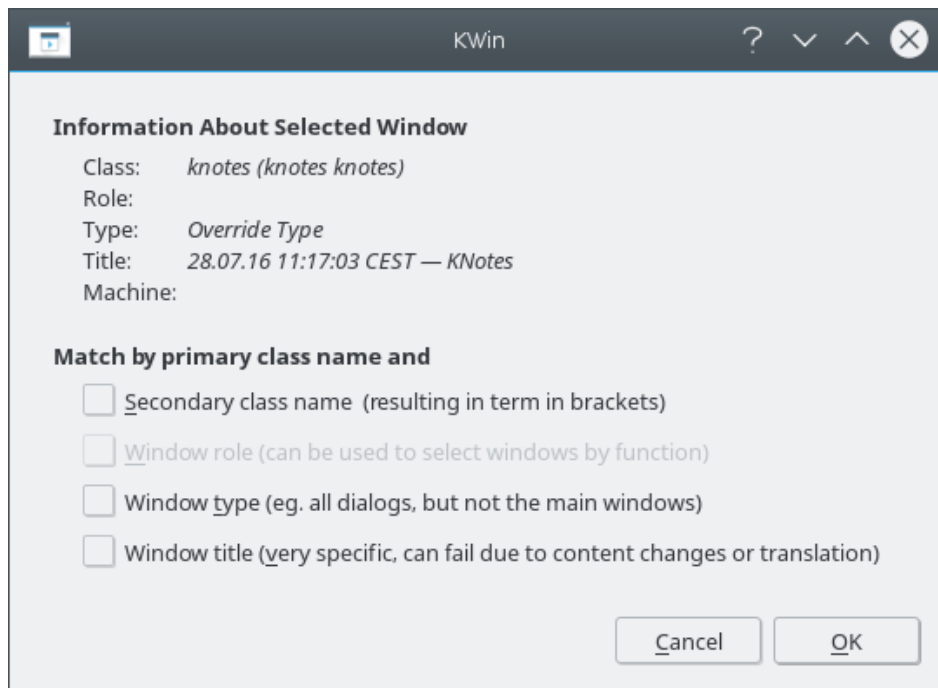


## 7.3 Suppress a Window from showing on Pager

**KNotes** currently does not allow for its notes to skip the pager however a rule easily solves this shortcoming.

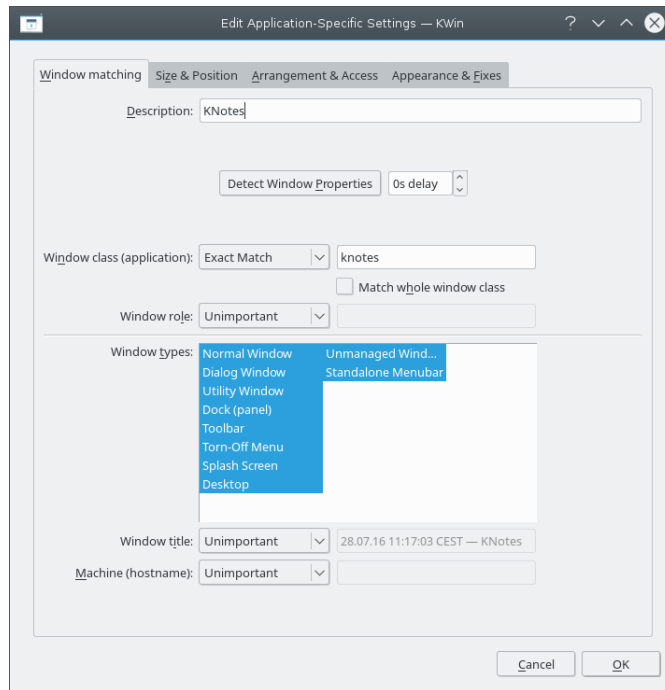
Assuming a *sticky note* window is available:

1. Use **Detect Window Properties** and select any *sticky note* window. Match only by primary class name so leave the check boxes unchecked - for additional information see [window matching](#):

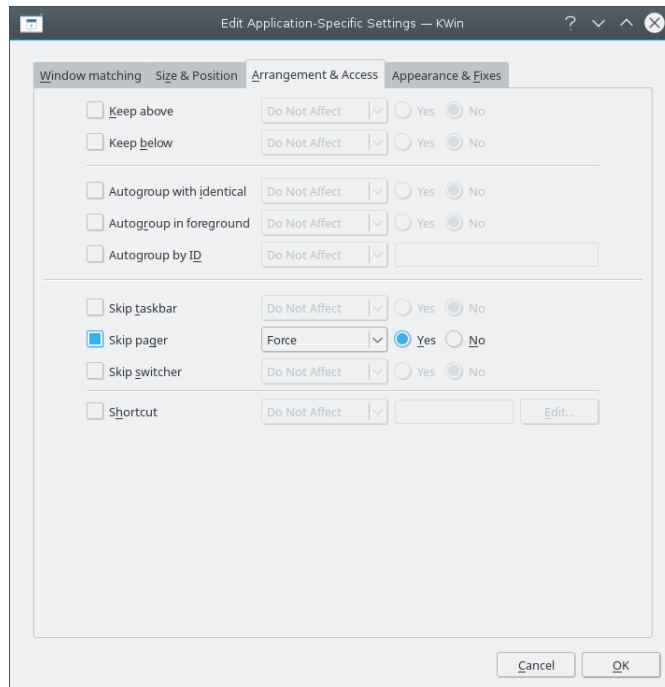


2. Clicking **OK** in the previous window back-fills the results in the **Window Matching** tab. Enter a meaningful text in the **Description** box:

## Window Rules



3. Enable the **Skip Pager** attribute with the **Force** parameter:

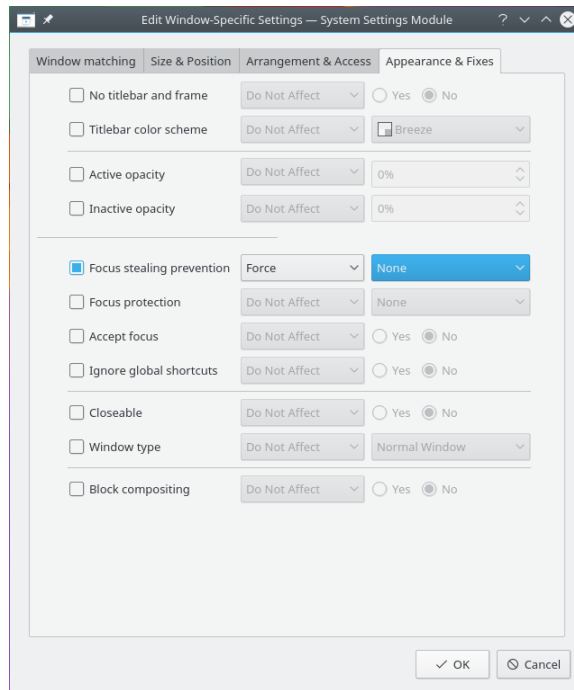


4. Click through to complete entry of the rule.

## 7.4 Force a Window to the Top

To pop an active window to the top, set its **Focus stealing prevention** attribute to **None**, typically, in conjunction with the **Force** parameter:

## Window Rules



## 7.5 Multiple Rules per Application

Thunderbird has several different child windows. This example:

- Pin Thunderbird's main window on *Virtual Desktop 1* with a specific size and location on the desktop.
- Allow the Thunderbird composer window to reside on any desktop and when activated, force focus and pop it to the top of all windows.
- Pop the Thunderbird reminder to the top and do not give it focus so it isn't inadvertently dismissed.

Each rule's matching criteria is sufficiently restrictive so their order within the main KWin window is not important to affect [rule evaluation](#).

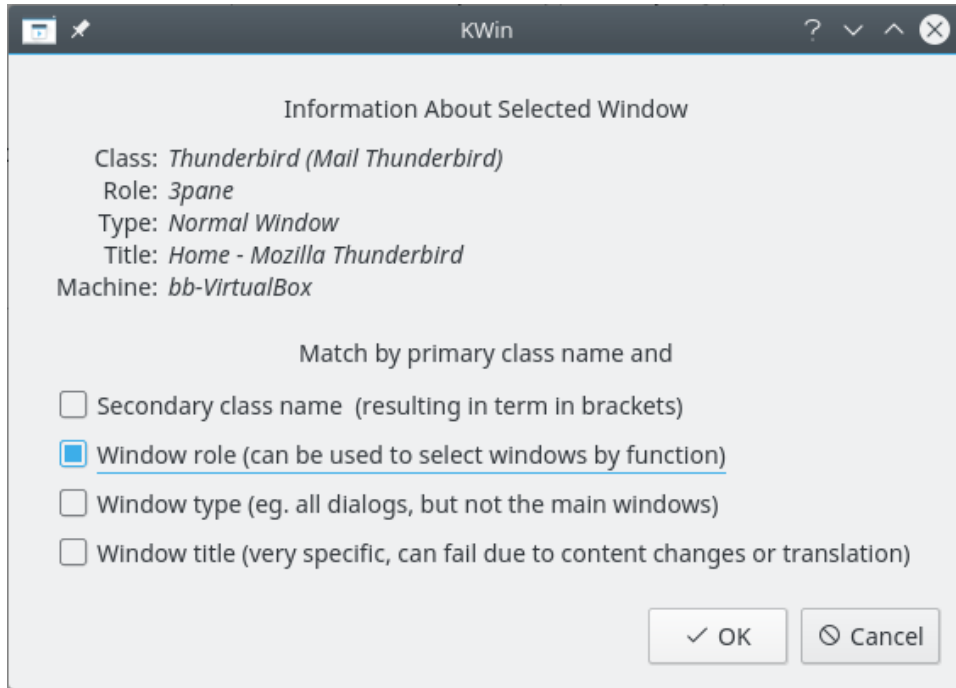
### 7.5.1 Thunderbird - Main

Assuming the **Thunderbird Main** window is open, sized and position to suit:

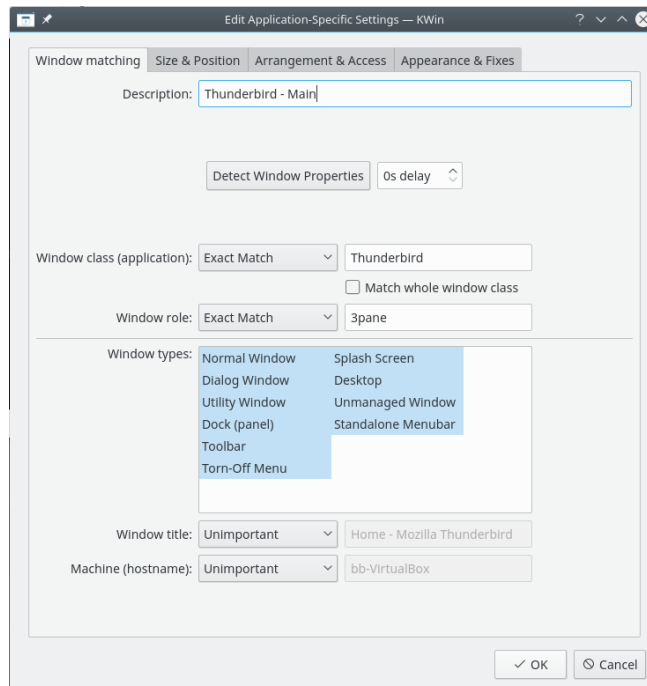
1. Use **Detect Window Properties** and select the **Thunderbird Main** window. Check the **Window role** box to restrict the criteria to the main window - for additional information see [window matching](#):



## Window Rules

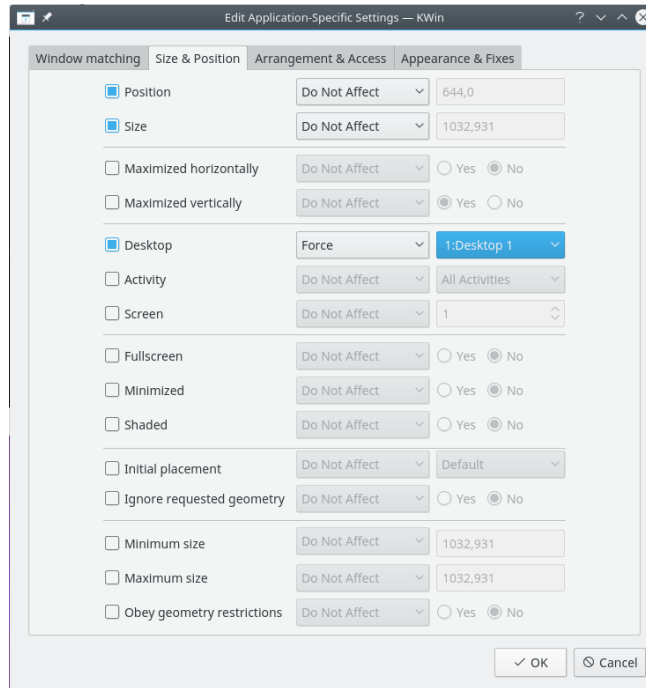


2. Clicking **OK** in the previous window back-fills the results in the **Window Matching** tab. Enter a meaningful text in the **Description** box:



3. Enable the following attributes:

## Window Rules

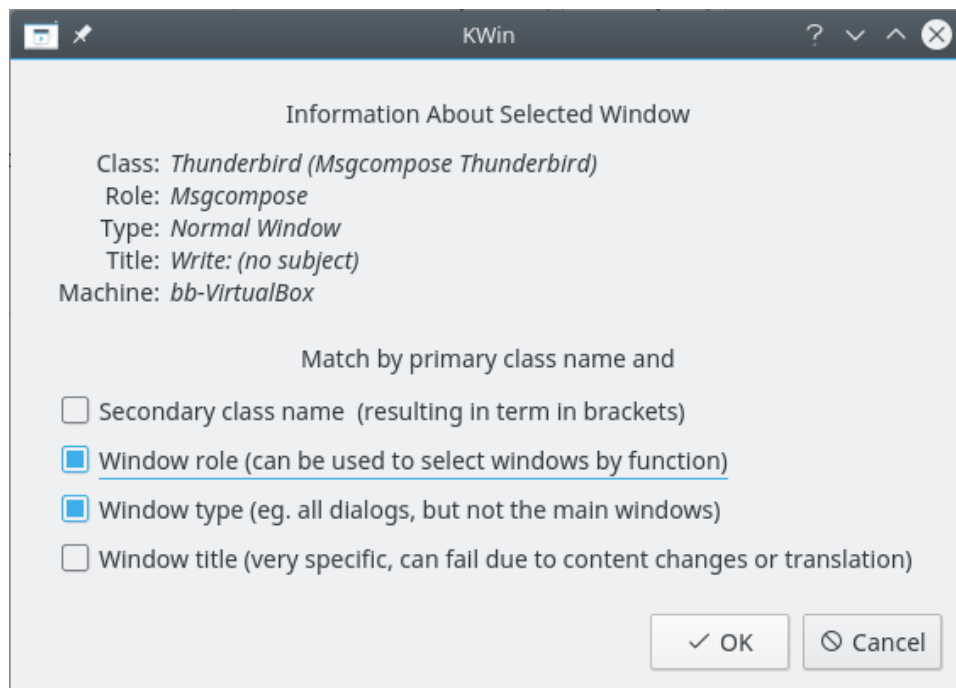


4. Click through to complete entry of the rule.

### 7.5.2 Thunderbird - Composer

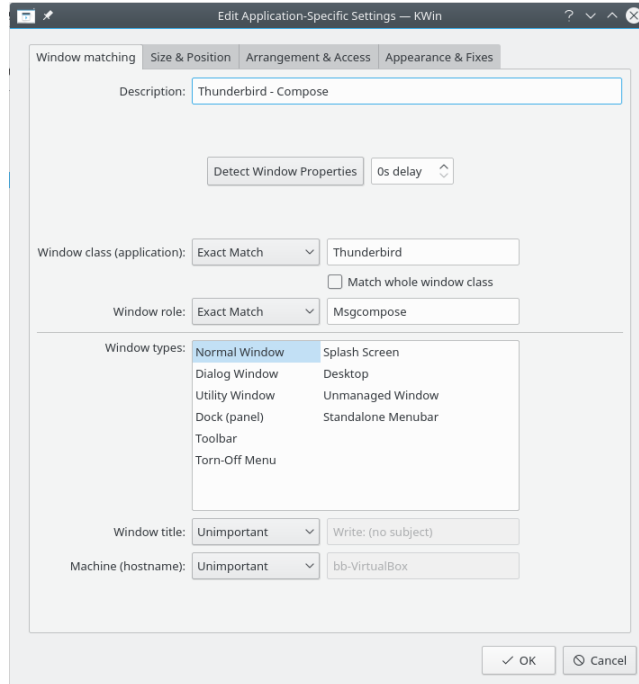
Assuming a **Thunderbird Composer** window is open:

1. Use **Detect Window Properties** and select the **Thunderbird Compose** window. Check the **Window role** and **Window type** boxes to restrict the criteria to composition windows - for additional information see [window matching](#):

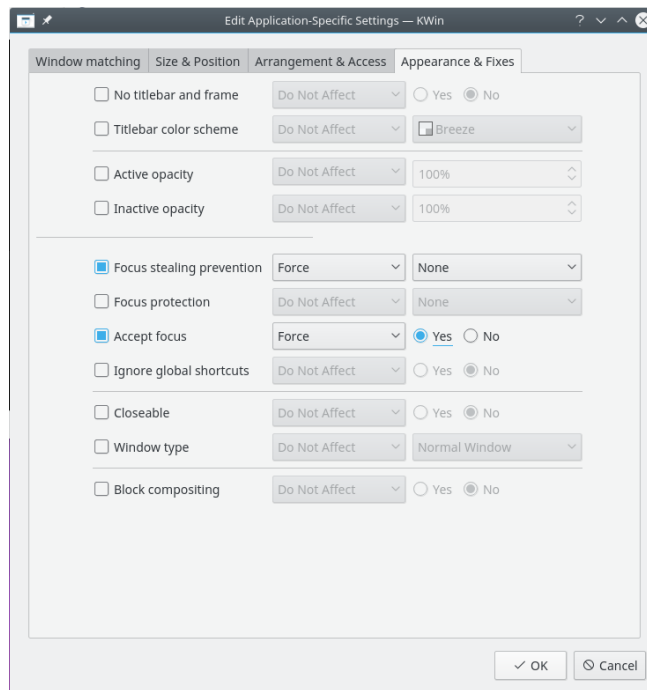


## Window Rules

2. Clicking **OK** in the previous window back-fills the results in the **Window Matching** tab. Enter a meaningful text in the **Description** box:



3. Enable the following attributes:



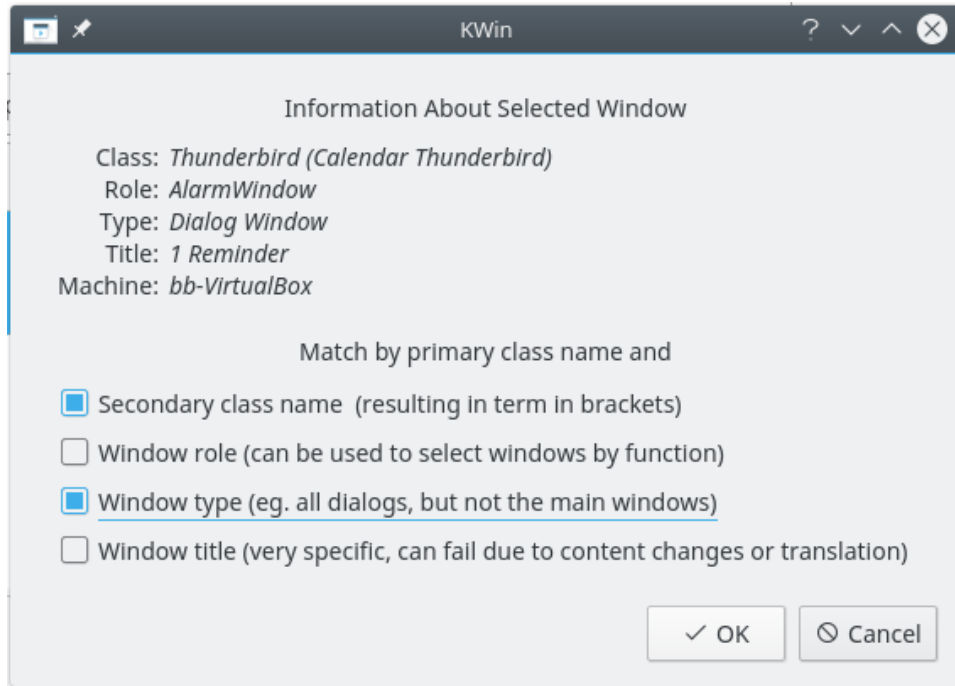
4. Click through to complete entry of the rule.

### 7.5.3 Thunderbird - Reminder

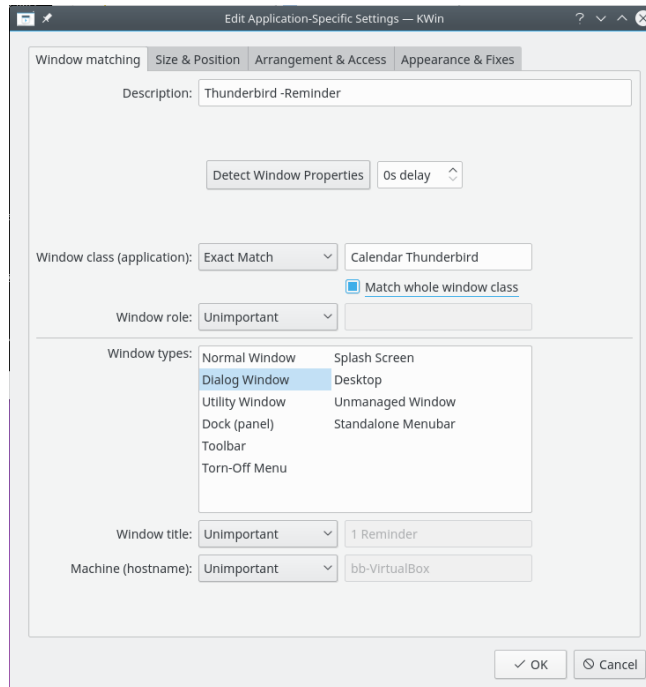
Assuming a **Thunderbird Reminder** window is open:

## Window Rules

1. Use **Detect Window Properties** and select the **Thunderbird Reminder** window. Check the **Secondary class name** and **Window Type** boxes to restrict the criteria to reminder windows - for additional information see [window matching](#):

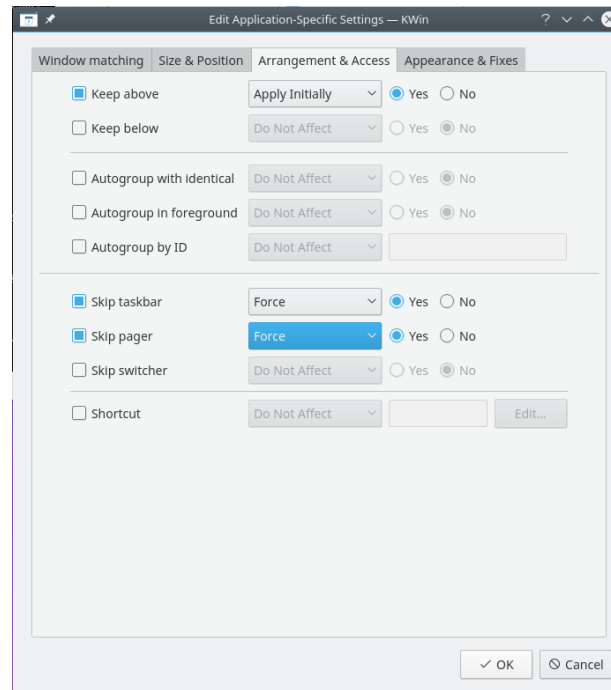


2. Clicking **OK** in the previous window back-fills the results in the **Window Matching** tab. Enter a meaningful text in the **Description** box:



3. Enable the following attributes:

## Window Rules



4. Click through to complete entry of the rule.

## Chapter 8

# Application Workarounds

Below are Workarounds for misbehaving applications.

**TIP**

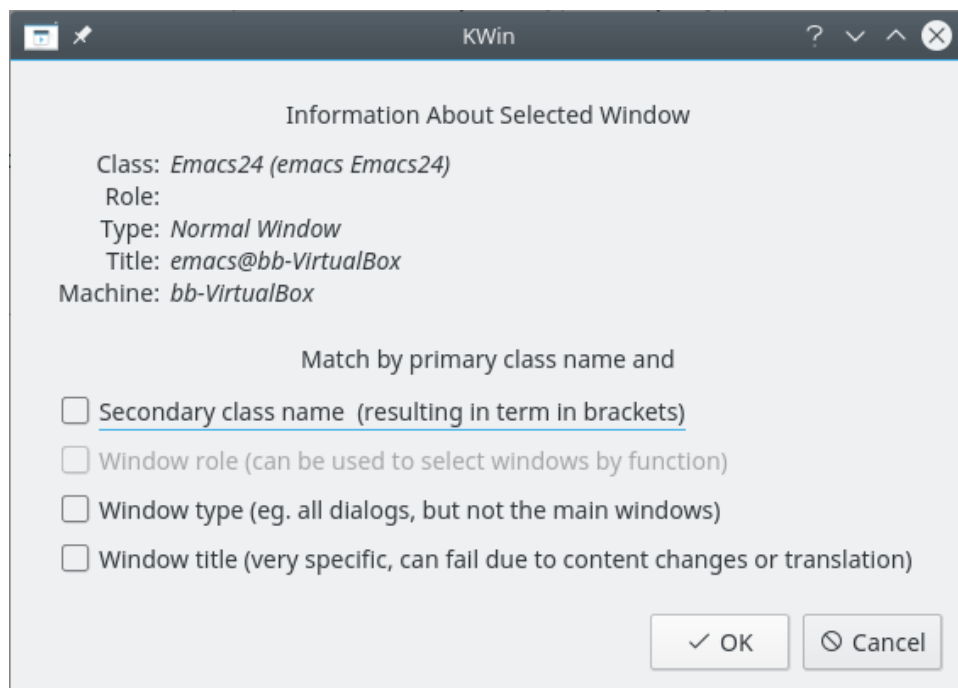
If you are unfamiliar with creating KWin Rules, see this [detailed example](#) to base your new rule.

### 8.1 Full-screen Re-size Error

Emacs and **gVim**, when maximized (full-screen mode) and under certain conditions may encounter window re-sizing issues - see [Emacs window resizes ...](#) A KWin Rule will work-around the issue.

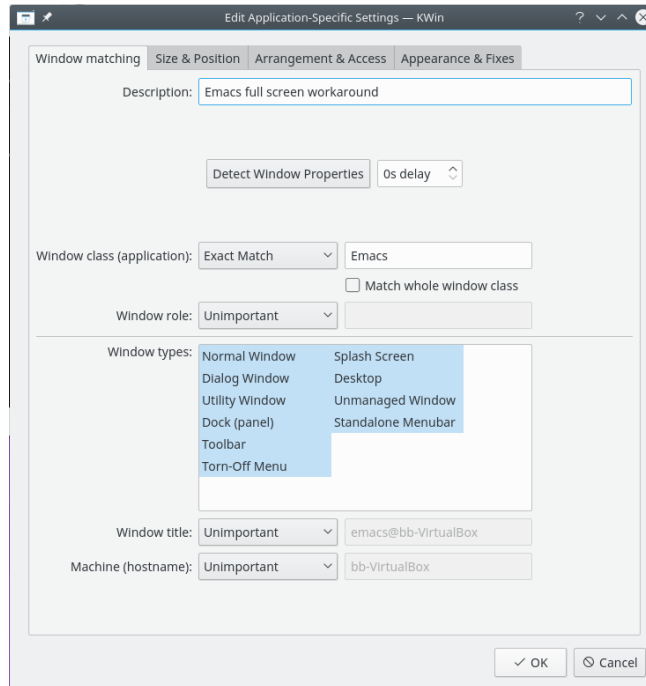
Assuming an Emacs window is open:

1. Use **Detect Window Properties** and select the Emacs window. Match only by **primary class name** so leave the check boxes unchecked - for additional information see [window matching](#)

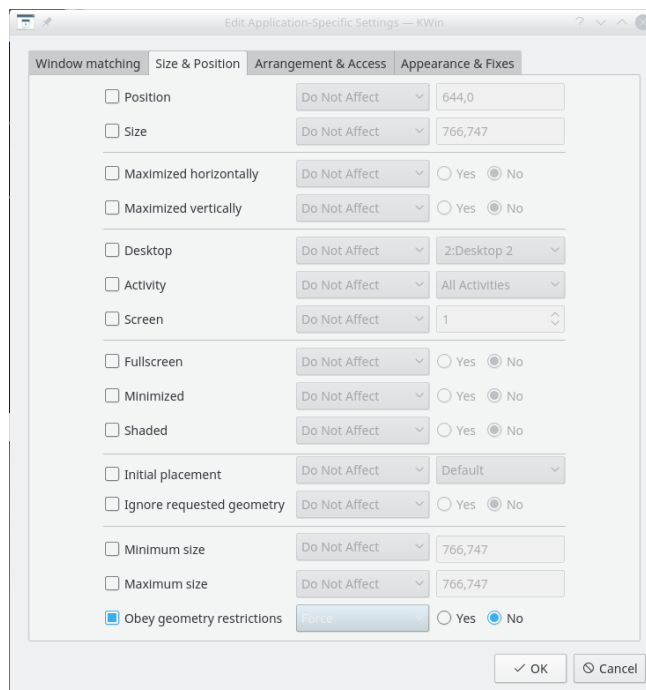


## Window Rules

2. Clicking **OK** in the previous window back-fills the results in the **Window Matching** tab. Enter a meaningful text in the **Description** text box:



3. Ignore Emacs's full-screen request by enabling the **Obey geometry restrictions** attribute, toggling it to off (**No**) to ignore and selecting the **Force** parameter:



4. Click through to complete entry of the rule.

## Chapter 9

# Credits and License

Documentation Copyright see the UserBase [KWin Rules page history](#)

This documentation is licensed under the terms of the [GNU Free Documentation License](#).