

Device Actions

Ben Cooksley
Anne-Marie Mahfouf



Device Actions

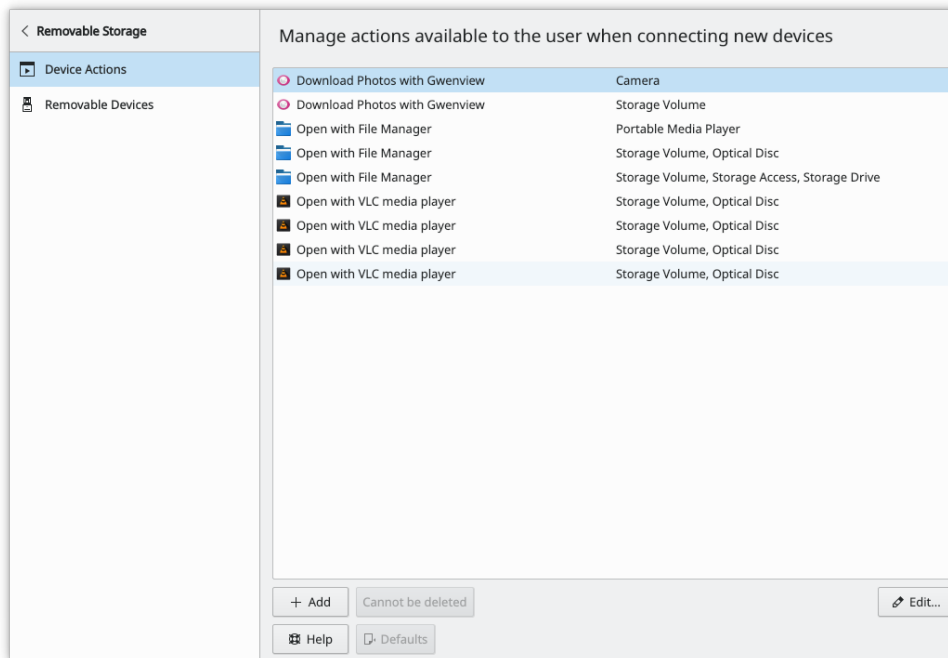
Contents

1	Actions for new devices	4
1.1	Introduction	4
1.2	Add Action	4
1.3	Edit Action	5
1.3.1	Edit parameter	5

1 Actions for new devices

1.1 Introduction

This module allows you to set up the actions you want to associate when you plug new devices.



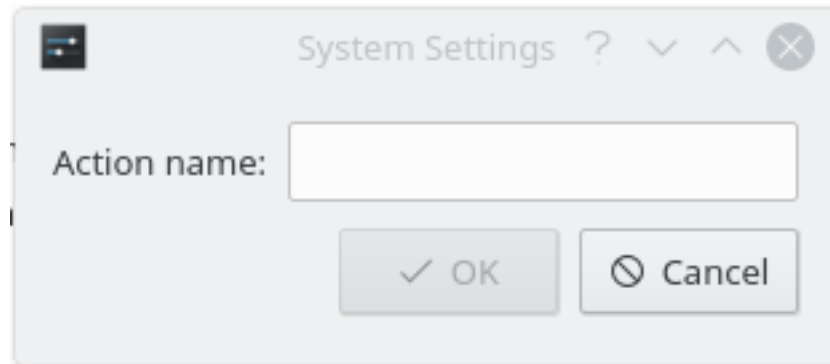
You will see listed all of the possible actions that are available when devices are plugged in. Please note that they will only be available under certain conditions.

- **Add** This will ask you to supply a name for your new action, then will open that action for editing. If you do not supply all the required details in that dialog, then your action will be deleted.
- **Edit** This will allow you to change the Name, Icon, command to execute and the conditions the action must match to be shown.
- **Discard / Cannot be deleted / Remove** This will do different actions, depending on if it was supplied with your system or created by you. You can only discard changes to system wide actions, if there are no changes then these actions cannot be deleted. User created actions are completely removed, including all changes.

1.2 Add Action

The **Add** button brings you a dialog to enter the new action name.

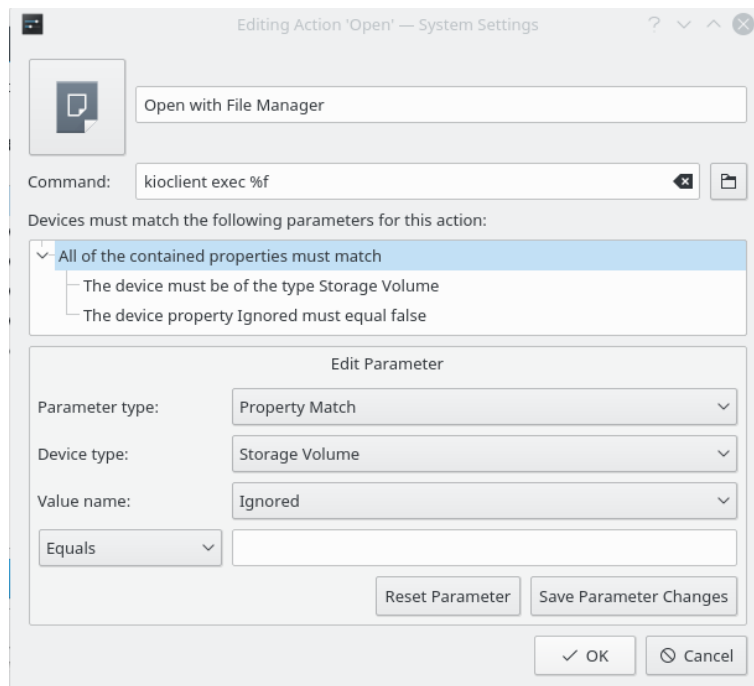
Device Actions



The action name should correctly describe the action. After entering a name and clicking **OK**, the Edit Action dialog will show to allow you to set up the action properties.

1.3 Edit Action

This dialog allows you to change the settings of the action you selected.



This includes the icon, the action name, the action command and the various parameters. You can change the icon by clicking on it.

The parameters are displayed in a tree, the top item having to be true in order for the action to be shown.

1.3.1 Edit parameter

Parameter type

This controls what can be contained inside it, or what matching is performed to check if it is true.

Device Actions

Property Match

Compares the specified property of the Device (using **Device type** and **Value name**) and using the evaluator, compares it against the text provided.

Content Conjunction

All sub-properties of this must be true for it to be true itself.

Content Disjunction

Any sub-property of this may be true for it to be true itself.

Device interface match

Checks to see if the Device can be classed as the selected Device type.

Device type

These are the possible device types supported by Plasma on your system. They are used in both Property and Device interface matches.

Value name

This is a list of all possible property names for the selected device type. It also provides the selection of the value evaluator (which is either **Equals** or **Contains**), and allows entry of the text to be compared with.

Reset Parameter

Reverts any unsaved changes you have made to this parameter.

Save Parameter changes

Saves the changes you have made to the parameter.