

# Icons

**Mike McBride**  
**Jost Schenck**  
**Anne-Marie Mahfouf**



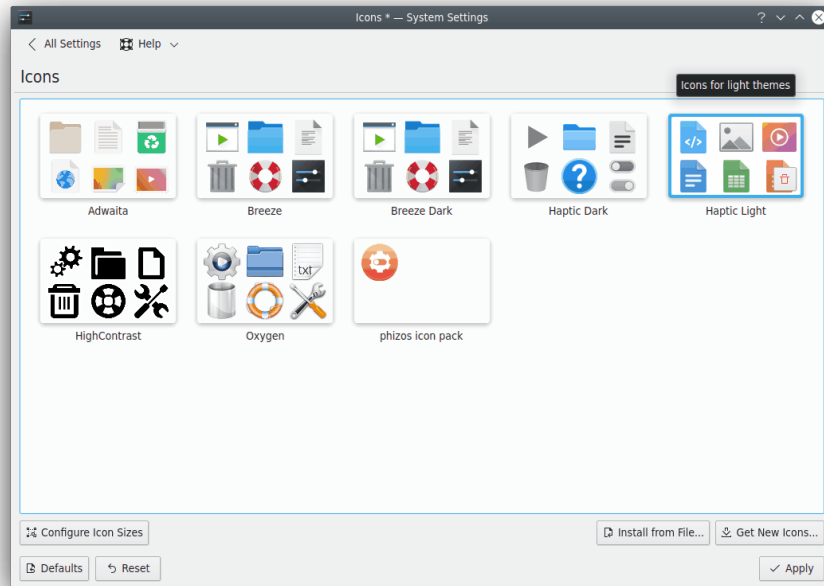
## Icons

Icons

## Contents

## Icons

Plasma comes with a full set of icons in several sizes. These icons are being used all over Plasma: the desktop, the panel, the Dolphin file manager, in every toolbar of every Plasma application, etc. The icons control module offers you very flexible ways of customizing the way Plasma handles icons.



In this module you can:


- install and choose icon themes
- choose different icon sizes
- remove icon themes


### IMPORTANT

Please note that some of these settings may depend on your selected icon theme. Plasma comes with several icon themes by default, Breeze, Breeze Dark and Oxygen.

At the top is a preview of the current theme icons. Most default installations will have only a few icon theme available, amongst them the Plasma default Breeze theme. You can also download more from the Internet from <https://store.kde.org/> or install them from a local file.

On hover an animated preview shows a random selection, common mime types and common folder icons.

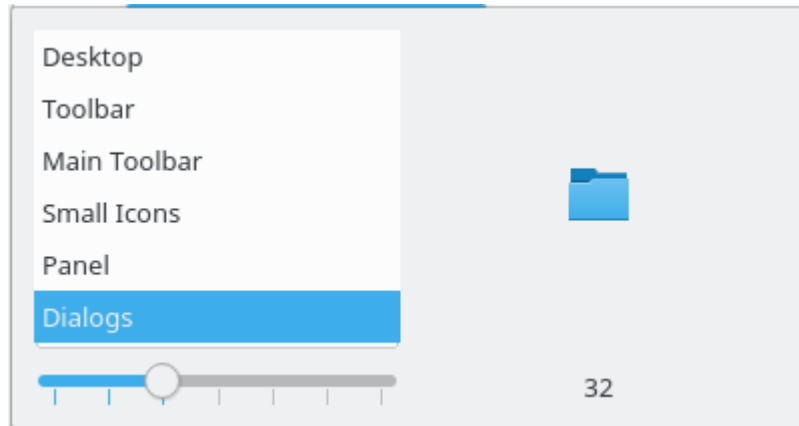
If you want to remove a theme, use the  overlay icon at the bottom right of the theme icon.

To undo this action click on the  icon. If you hit the **Apply** button the themes selected for removal are actually deleted, so you cannot undo individual or all deletions.

### Configure Icon Sizes

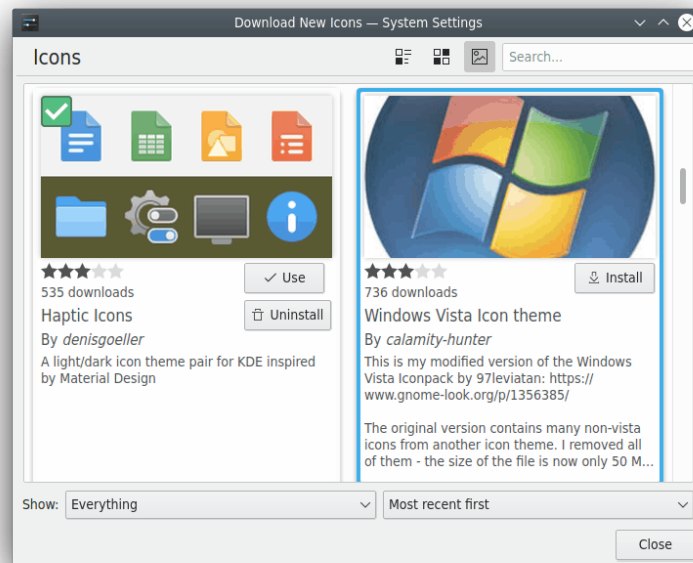
Select one of the components and use the slider to adapt the corresponding size.

## Icons



### Get New Icons...

You need to be connected to the Internet to use it. Clicking on this button will display a dialog where you can choose a new icon theme. Clicking on **Install** in the dialog will install the chosen icon theme and after you **Close** the installer your new theme is immediately available.



### Install from File...

If you downloaded new themes from the internet, you can use this to browse to the location of those newly downloaded themes. Clicking on this button will bring you the file dialog to point to the icon theme tarball you have on your disk.

Clicking **Open** in this dialog will install the theme you pointed to and make it available in the theme list.